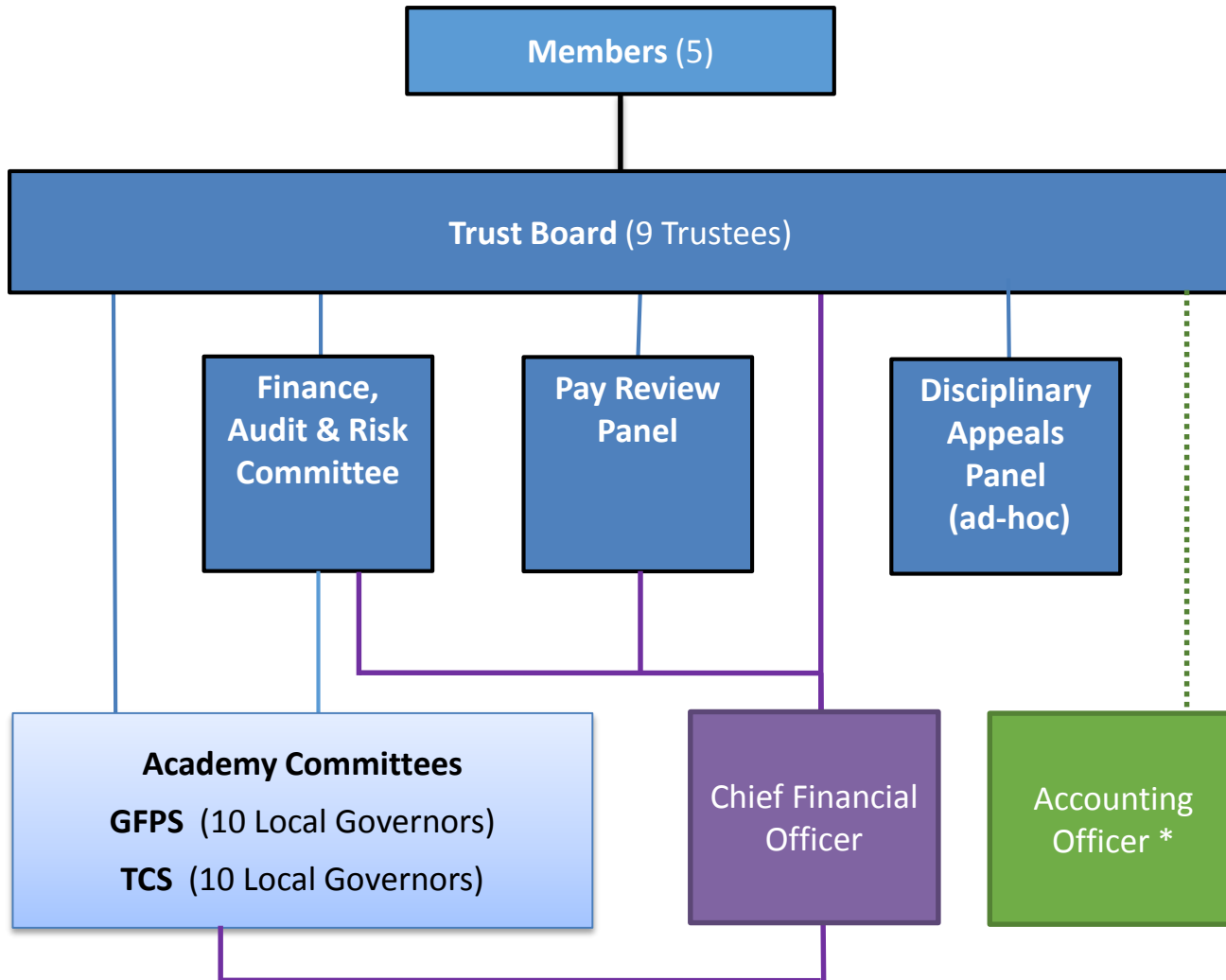


# Bernwode Schools Trust – Governance Structure



## Three levels of governance

The Bernwode Schools Trust operates through three separate levels of governance, using a published Scheme of Delegation, which sets out clearly the roles and responsibilities of those involved at each level of the Trust.

### Members

Members 'own' the Trust. They have a number of statutory rights, including the responsibility for appointing and removing Trustees.

### Trustees

Trustees are appointed by the Members to be responsible for the governance and supervision of the Academy Trust. The Trustees' focus is strategic, concerned with the long-term viability and development of the Trust.

### Academy Committees

Academy Committees are comprised of the Headteacher of the school, and Local Governors, some of whom are elected by parents and staff, and some of whom are appointed by the Trustees.

The Local Governors' focus is non-operational and is concerned with school improvement and pupil outcomes. They act as a 'critical friend' to the Headteacher.

The committees are responsible for the budget and financial management of their school.